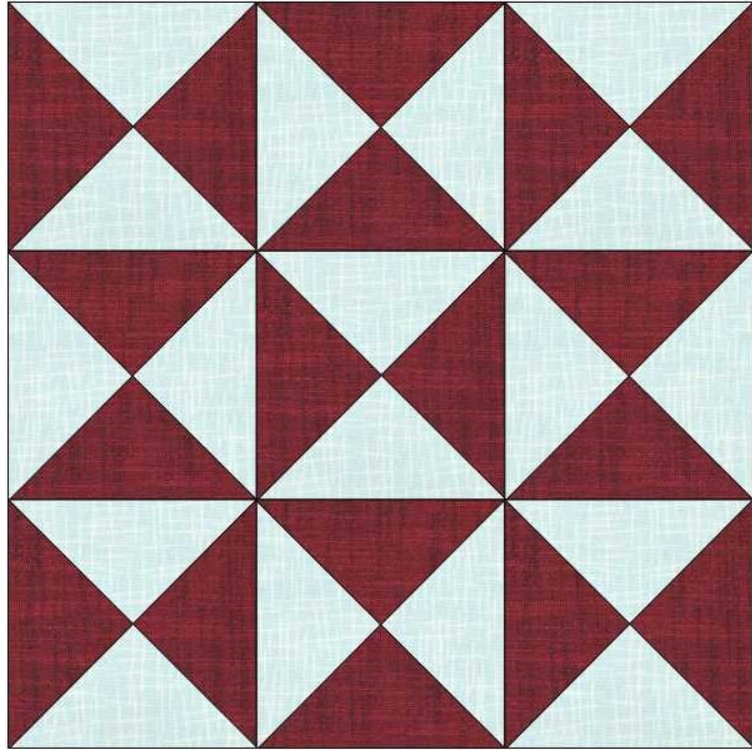


Block 8 - Broken Dishes

12 inch Finished Block

5 - Squares of Light fabric cut at 5 ½ inches

5 - Squares of Dark fabric cut at 5 ½ inches



On 2 of these units draw a diagonal line that goes across the seam line from corner to corner.

Place these units right sides together, on top of the other unmarked half square triangles. Snug the seam from the top unit to the seam on the lower unit. (Be sure that you peek and have background fabric on top of the star point fabric) Sew ¼" on each side of the drawn line. When sewing these pieces together, sew with the seam on the bottom unit pointed towards you and the top seam going under the needle first. Take the unit out and sew in the same direction as before. Cut on the newest drawn line and twirl the center seams.

Repeat till you have made all the squares into hour glass blocks
(you will have one block left over)

Follow the picture layout of the block as in the quilt (wrong) or as the attached picture.
Sew the units together just like a 9 patch.

Done